

GAMMATRACER SPIDER

Autonomous gamma probe for emergency response

GAMMATRACER Spider

- Ultra compact self-erecting design, very simple deployment
- Maximum protection of first responders
- Emergency proof communication options
- SkyLINK/ShortLINK radio (up to 100 km / 60 mi) or satellite modem (Iridium)
- Rechargeable battery, up to 4 years operation
- Built-in GPS
- Hermetically sealed weatherproof housing
- Wide measurement range: 20 nSv/h to 10 Sv/h
- Allows fast extension of monitoring networks



The autonomous gamma probe is specially designed to cover the needs of first responders in an emergency scenario.

Based on the proven GammaTRACER design, the probe provides reliable measurement of the gamma dose rate and wireless data transmission to the crisis center by using SkyLINK/ShortLINK radio or Iridium satellite modem.

The compact design and innovative self-erecting enclosure facilitate deployment and minimize time, particularly important for emergency use and roll-out in contaminated area. The probe can simply be dropped out of a vehicle or pushed out through a lock or outlet. Thus, exposure to personnel can be significantly reduced. Alternatively deployment by a remote controlled drone or by parachute is possible.

Due to its excellent reception performance, SkyLINK radio provides outstanding area coverage independent from public communication networks, proven in many installations worldwide. Alternatively, data transmission by Iridium satellite can be suitable wherever very large areas have to be covered. As public telecom infrastructure might be affected by overload or wide-ranging power breakdown, GammaTRACER is THE solution for emergency applications.

PHYSICAL CHARACTERISTICS

- Detectors: 2 Geiger-Mueller tubes, energy compensated H*(10)
- Energy range: 45 keV ... 2 MeV (IEC60846-1 : 2009)
- Measurement range: 20 nSv/h ... 1 Sv/h (optional 10 Sv/h)
- Measurement cycle: 1 min ... 2 hours
- Internal data storage: up to 12 000 data sets
- Built-in sensors: GPS, temperature, movement

ENVIRONMENTAL CHARACTERISTICS

- Temperature range: -20° C ... 50° C (-4° F ... +122° F), optional -30° C ... +60° C (-22° F ... 140° F)
- Humidity: 100 %
- Protection class: IP 68 (hermetically sealed)

MECHANICAL CHARACTERISTICS

- Dimensions (ø, H): 110 mm x 650 mm
- Weight: 2.5 kg

ELECTRICAL CHARACTERISTICS

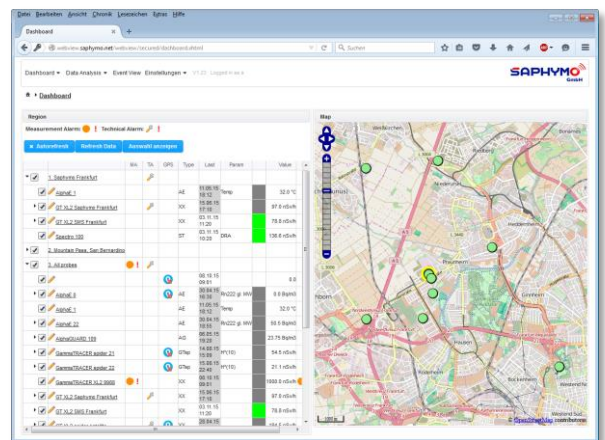
- Built-in rechargeable battery pack, easy exchange in the field
- Battery autonomy: 4 years without data transmission
(GPS once/day) 3 months with SkyLINK/ShortLINK radio @ 1 min cycle / 1 min Tx
2 years with SkyLINK/ShortLINK radio @ 10 min cycle / 10 min Tx
3 years with SkyLINK/ShortLINK radio @ 1h cycle / 1h Tx
1 year with satellite, Iridium modem @ 10 min cycle / 1 h Tx
2.5 years with satellite, Iridium modem @ 1h cycle / 4 h Tx

INTERFACES

- Local port: Infrared interface for data readout and setup
- Option: Built-in SkyLINK/ShortLINK radio modem for data transmission up to 100 km / 60 mi (SkyLINK), 5 km / 3 mi (ShortLINK), depending on site conditions
- Option: Built-in Iridium satellite modem, worldwide coverage

DataEXPERT DATA MANAGEMENT SOFTWARE

- Automatic processing of measurement data from different instruments (monitors for gamma, aerosols, spectroscopy, iodine, gas, ...)
- Alarm management, event notification by email / SMS
- Visualization of current and historic data on static or GIS maps
- NEW: WebVIEW module for data visualization by web browser
- MS-SQL database
- Various report and export functions
- Option: Redundant server topology for high availability requirements



SAPHYMO FRANCE - Headquarters

Parc d'activité du Pas du Lac
10 bis avenue Ampère
87180 Montigny-le-Bretonneux
Tel.: +33 (0)1 69 53 73 00

Contact: nuclearsales@saphymo.fr

SAPHYMO GmbH

Heerstrasse 149
D-60488 Frankfurt am Main
Tel.: +49 (0)69 976 514 0
Contact: sales@saphymo.de

SAPHYMO Italia

Vico Chiuso Paggi, 4/11
I-16128 Genova
Tel.: +39 (0)10 25 12 978
Contact: mail@saphymoitalia.com